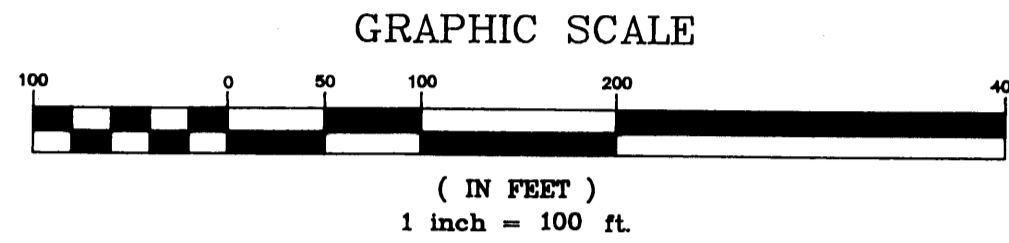
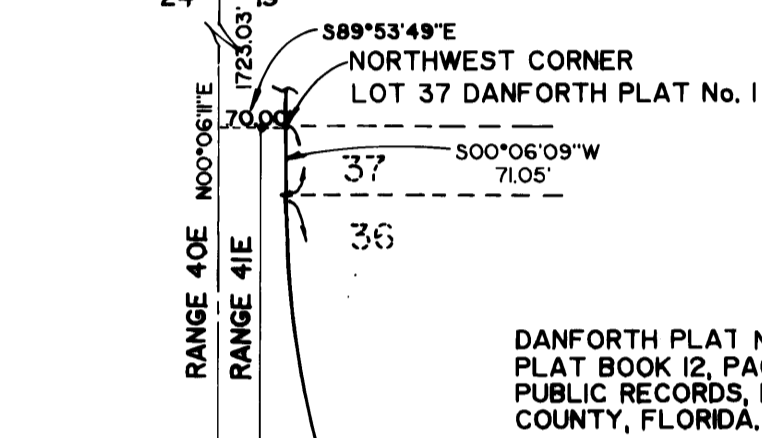


DANFORTH PLAT NO. 4 (PHASE 1C)

BEING A PORTION OF SECTION 19,
TOWNSHIP 38 SOUTH, RANGE 41 EAST,
MARTIN COUNTY, FLORIDA
AUGUST 1993



POINT OF COMMENCEMENT
NORTHWEST CORNER OF SECTION 19,
TOWNSHIP 38S, RANGE 41E



DANFORTH PLAT No. 1
PLAT BOOK 12, PAGE 43
PUBLIC RECORDS, MARTIN
COUNTY, FLORIDA.

DETAIL "C"
SCALE: 1"=200'

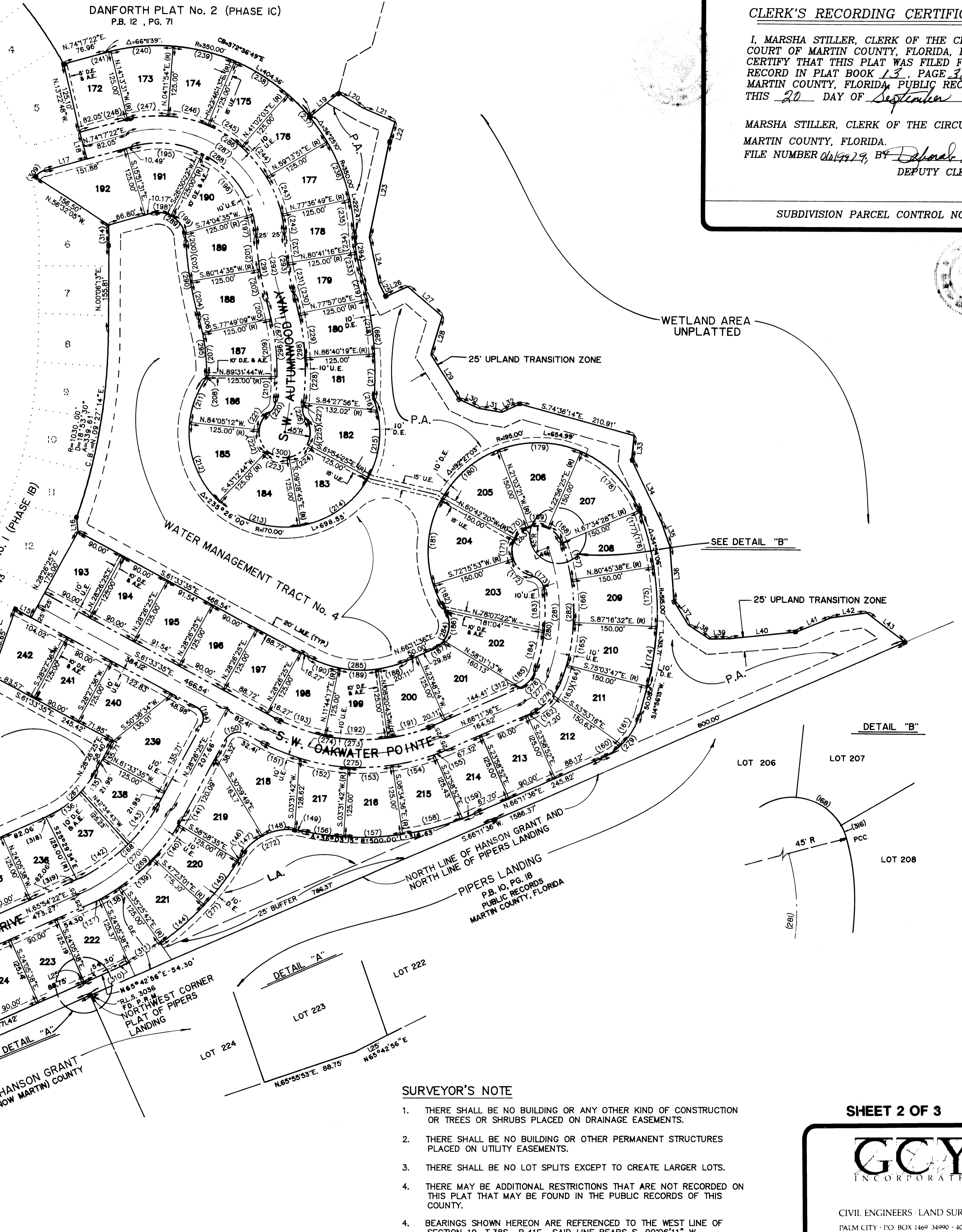
P.O.B.
NORTH EAST CORNER
OF DANFORTH PLAT No. 3
(PHASE 1C)
PLAT BOOK 13, PAGE 12
PUBLIC RECORDS MARTIN
COUNTY, FLORIDA.

DANFORTH PLAT No. 3
(PHASE 1C)
PLAT BOOK 13, PAGE 12
PUBLIC RECORDS MARTIN
COUNTY, FLORIDA

LEGEND

- DENOTES P.R.M. (PERMANENT REFERENCE MONUMENT) FOUND
- DENOTES P.R.M. (PERMANENT REFERENCE MONUMENT) SET
- DENOTES P.C.P. (PERMANENT CONTROL POINT)
- D.E. DENOTES DRAINAGE EASEMENT
- M.E. DENOTES MAINTENANCE EASEMENT
- U.E. DENOTES UTILITY EASEMENT
- (R) RADIAL LINE
- P.A. PRESERVATION AREA
- L.A. LANDSCAPE AREA
- A.E. ACCESS EASEMENT
- L.M.E. LAKE MAINTENANCE EASEMENT
- P.O.B. POINT OF BEGINNING

DANFORTH PLAT No. 2 (PHASE IC)
P.B. 12, PG. 71

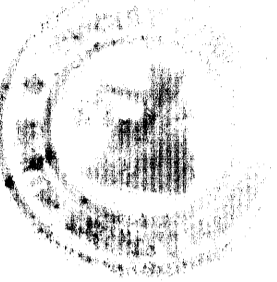


CLERK'S RECORDING CERTIFICATE

I, MARSHA STILLER, CLERK OF THE CIRCUIT COURT OF MARTIN COUNTY, FLORIDA, HEREBY CERTIFY THAT THIS PLAT WAS FILED FOR RECORD IN PLAT BOOK 13, PAGE 38, MARTIN COUNTY, FLORIDA, PUBLIC RECORDS THIS 20 DAY OF September, 1993.

MARSHA STILLER, CLERK OF THE CIRCUIT COURT
MARTIN COUNTY, FLORIDA.
FILE NUMBER 0614929, BY *Dorothy Langston*
DEPUTY CLERK

SUBDIVISION PARCEL CONTROL NO.



SEE DETAIL "B"

DETAIL "B"

DETAIL "A"

SURVEYOR'S NOTE

1. THERE SHALL BE NO BUILDING OR ANY OTHER KIND OF CONSTRUCTION OR TREES OR SHRUBS PLACED ON DRAINAGE EASEMENTS.
2. THERE SHALL BE NO BUILDING OR OTHER PERMANENT STRUCTURES PLACED ON UTILITY EASEMENTS.
3. THERE SHALL BE NO LOT SPLITS EXCEPT TO CREATE LARGER LOTS.
4. THERE MAY BE ADDITIONAL RESTRICTIONS THAT ARE NOT RECORDED ON THIS PLAT THAT MAY BE FOUND IN THE PUBLIC RECORDS OF THIS COUNTY.
4. BEARINGS SHOWN HEREON ARE REFERENCED TO THE WEST LINE OF SECTION 19, T.38S., R.41E., SAID LINE BEARS S. 00°06'11" W.

SHEET 2 OF 3

GCOY
INCORPORATED

CIVIL ENGINEERS - LAND SURVEYORS
PALM CITY - P.O. BOX 1469 34990 - 407-286-8083
FT. PIERCE - 4980 S. 25th STREET 34982 - 407-466-9500